

Press release

durlum presents its recent developments at Light+Building 2010

durlum is a manufacturer of innovative metal ceilings, lighting and daylight systems. At this year's Light+Building we present some of our current developments of architectural lighting solutions together with Alanod and the Bartenbach Academy.

Light influences us in many ways. It impacts our attention, performance, mental fatigue, health and general well-being. As such, light is not just important for our visual perception, but also for the control of the human organism. Any lighting system should hence aim for creating an ideal lighting situation. To ensure these qualities, durlum is working together with renown partners such as Alanod and the Bartenbach Academy. Together, we combine material know-how, lighting research, technology and production-know-how to realize lighting solutions, that make you feel at home.

Some of our innovations are shown below:

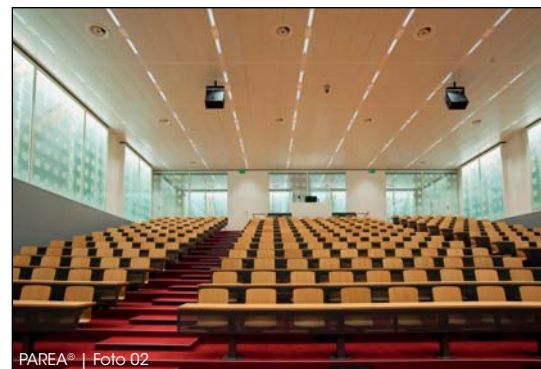
LIGHT PIPE is an innovative daylight system. It offers the possibility of conducting natural light from the outside down into rooms, in order to use the bright, environmentally friendly and especially pleasant light of the sun optimally. The Fresnel fade-out blades in the top section of the daylight pipe ensure an even level of lighting. LIGHT PIPE is primarily used in halls, in buildings with large rooms and in areas without any daylight.

The **PAREA**® illuminated surface wall creates bright, homogenously lighted surfaces that seemingly dissolve the room enclosures. PAREA® is ideal for simulating daylight as its expansive, spatially structured reflectors direct light from an "invisible" LED light into the room. The integrated lighting technology can be adjusted to meet any demands and a digital print can be affixed to the glass cover at request.

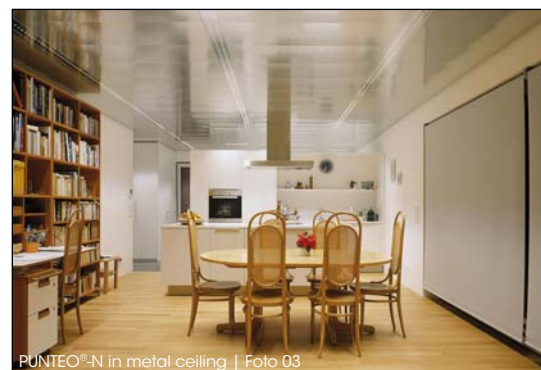
PUNTEO®-N are LED spotlights which can be adapted individually to the interior design. PUNTEO®-N can be optimally integrated into the durlum ceiling systems. With the LED-based PUNTEO®-N technology, no lights are visible any more. Instead, only 8 mm small openings in the shrouds or plates of the metal ceiling, through which the light emerges. The light of the LED is conducted through the small opening in the metal ceiling plate with a lens system.



LIGHT PIPE | Foto 01



PAREA® | Foto 02



PUNTEO®-N in metal ceiling | Foto 03



durlum GmbH
D-79650 Schopfheim
T +49 (0) 76 22 | 39 05-0
F +49 (0) 76 22 | 39 05-42
E info@durlum.com
I www.durlum.com